

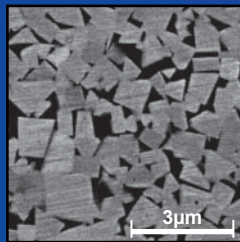
CARBIDE BLADES for BEVEL GEARS

Mitsubishi Carbide Blades features precision, quality, and durability by adopting cemented carbide technology and top-tier manufacturing process.

■ Features

● Excellent wear resistance and fracture resistance

TF15 grade has exceptional advantages of high strength and toughness with optimizing high fracture resistance and strong edge sharpness.



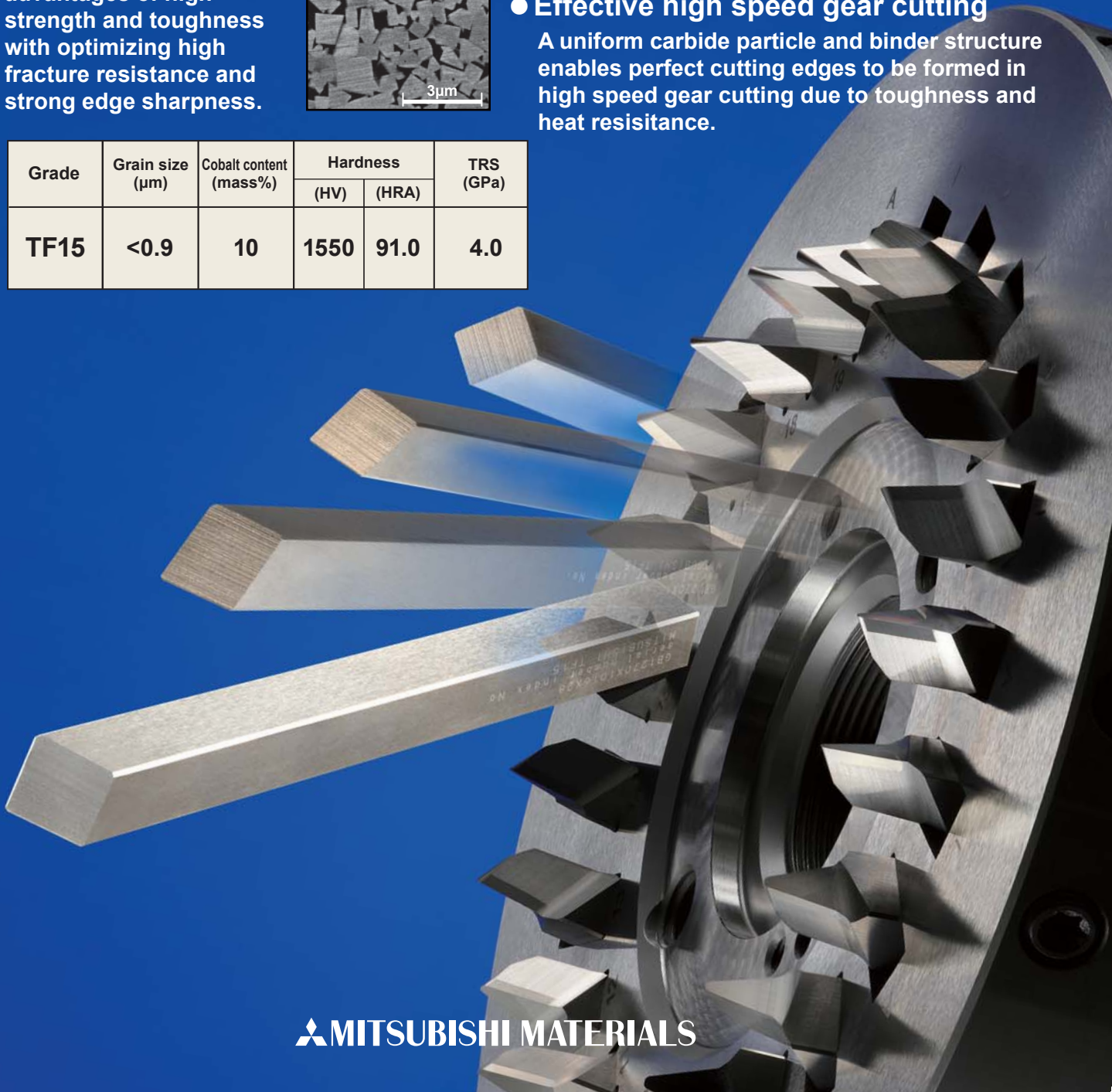
● Proprietary grinding technology

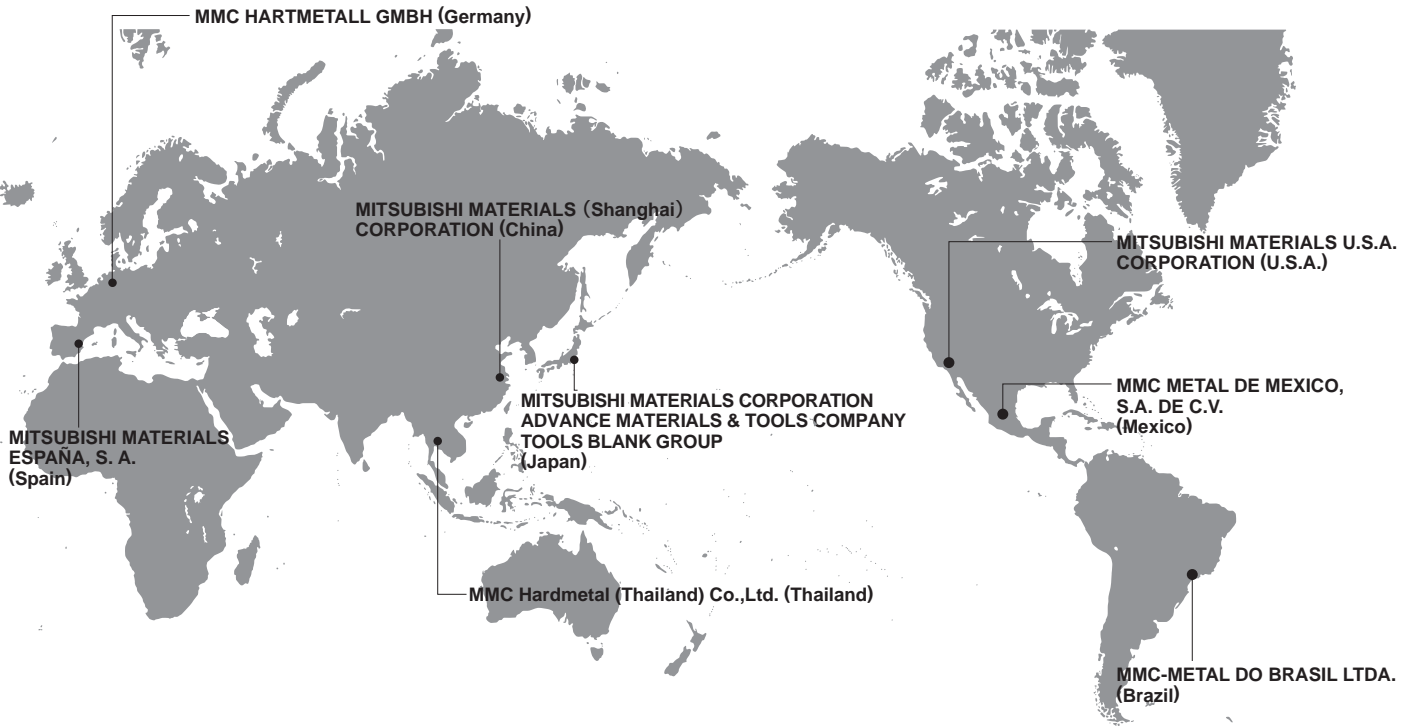
Our grinding technology enables you to machine a high precision cutting edge with grinded faces.

● Effective high speed gear cutting

A uniform carbide particle and binder structure enables perfect cutting edges to be formed in high speed gear cutting due to toughness and heat resistance.

Grade	Grain size (µm)	Cobalt content (mass%)	Hardness		TRS (GPa)
			(HV)	(HRA)	
TF15	<0.9	10	1550	91.0	4.0





MITSUBISHI MATERIALS CORPORATION

Japan **MITSUBISHI MATERIALS CORPORATION**
ADVANCE MATERIALS & TOOLS COMPANY
TOOL BLANK GROUP
 KFC bldg., 8F, 1-6-1, Yokoami, Sumida-ku, Tokyo 130-0015, Japan
 TEL +81-3-5819-5316 FAX +81-3-5819-5310

Subsidiaries of MITSUBISHI MATERIALS CORPORATION

Germany	MMC HARTMETALL GMBH Comeniusstr. 2,40670, Meerbusch, GERMANY TEL +49-2159-91890 FAX +49-2159-918966	U.S.A.	MITSUBISHI MATERIALS U.S.A. CORPORATION 11250, Slater Avenue, Fountain Valley, California, 92708, USA TEL: +1-714-352-6153 FAX: +1-714-668-1321
Spain	MITSUBISHI MATERIALS ESPAÑA, S. A. Calle Emperador 2, 46136, Museros, Valencia, SPAIN TEL: +34-96-144-1711 FAX: +34-96-144-3786	Mexico	MMC METAL DE MEXICO S.A. DE C.V. Av. La Canada No.16 Parque Industrial Bernardo Quintana El marques, Queretaro. CP76246 MEXICO TEL +52-442-221-6136 FAX +52-442-221-6134
China	MITSUBISHI MATERIALS (Shanghai) CORPORATION Room 4107, UNITED PLAZA 1468, Nanjing Road West, Shanghai, 200040 CHINA TEL +86-21-6289-0022 FAX +86-21-6279-1180	Brazil	MMC-METAL DO BRASIL LTDA. Rua Cincinato Braga, 340 13º andar.Bela Vista- CEP 01333-010 São Paulo-SP., BRAZIL TEL +55-11-3285-5095 FAX +55-11-3285-4906
Thailand	MMC Hardmetal (Thailand) Co.,Ltd. CT1 Tower 24th Floor, 191/32 Ratchadapisek Road, Klongtoey, Bangkok 10110, THAILAND TEL +66-2661-8170 FAX +66-2661-8175		

<http://blank.mitsubishicarbide.com/>

