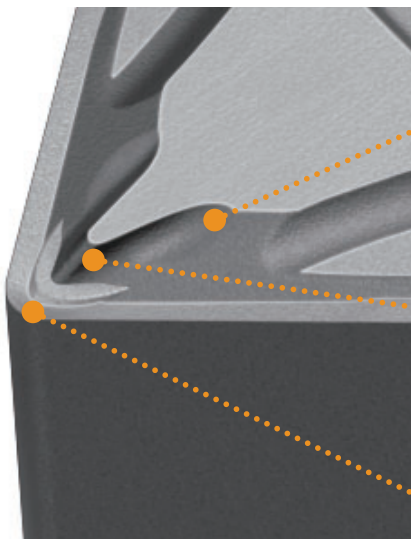
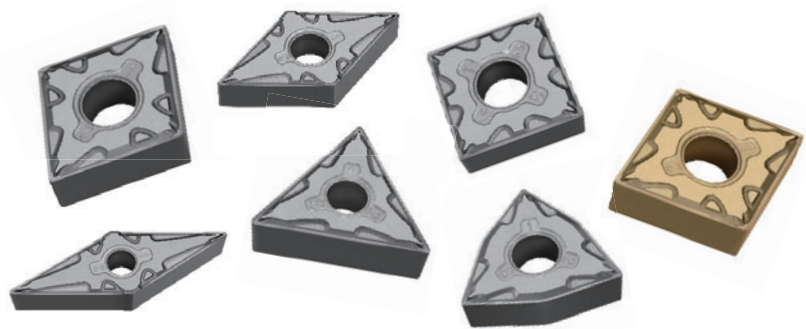


Finish Cutting Breaker of Cermet Grade for Steel

FP Breaker

Better choice for finish cutting of steel offers good chip control in wide cutting conditions.



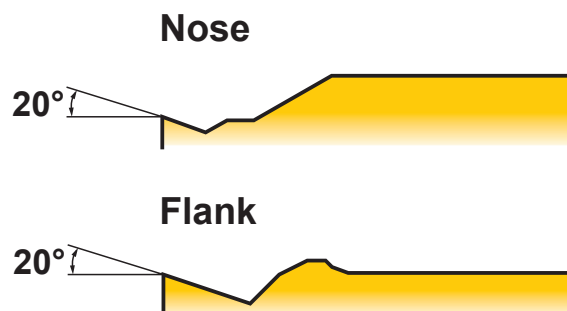
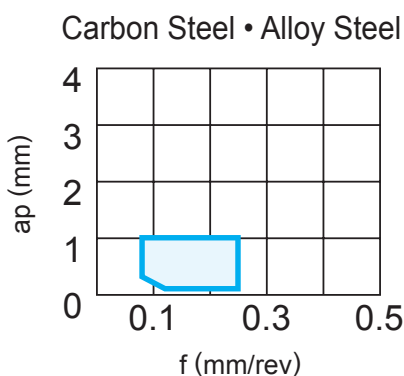
Stable Chip Control in Wide Range

1st and 2nd convex and recess geometry provide stable chip control. 1st convex provides excellent chip control in low feed rates.

Available to Both General and Low Carbon Steel Cutting

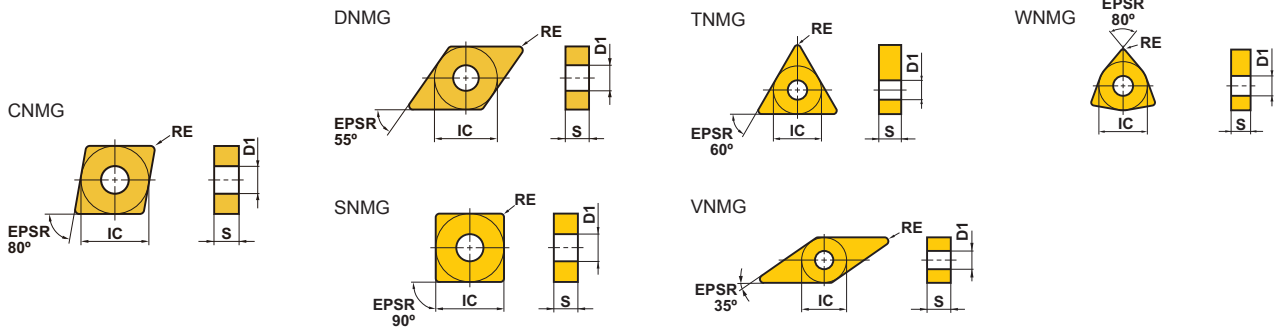
2nd convex is effective for chip control of soft materials.

A Good Surface Finish Through the 20° Positive High Rake Angle



Negative Inserts (With hole)

M Class



Order Number	Cutting Area	Stock		IC	S	RE	D1	(mm)							
		MP3025	NX2525					IC	S	RE	D1	IC	S	RE	D1
CNMG120402-FP	F	●	●	12.7	4.76	0.2	5.16	TNMG160402-FP	F	●	●	9.525	4.76	0.2	3.81
CNMG120404-FP	F	●	●	12.7	4.76	0.4	5.16	TNMG160404-FP	F	●	●	9.525	4.76	0.4	3.81
CNMG120408-FP	F	●	●	12.7	4.76	0.8	5.16	TNMG160408-FP	F	●	●	9.525	4.76	0.8	3.81
DNMG150402-FP	F	●	●	12.7	4.76	0.2	5.16	VNMG160402-FP	F	●	●	9.525	4.76	0.2	3.81
DNMG150404-FP	F	●	●	12.7	4.76	0.4	5.16	VNMG160404-FP	F	●	●	9.525	4.76	0.4	3.81
DNMG150408-FP	F	●	●	12.7	4.76	0.8	5.16	VNMG160408-FP	F	●	●	9.525	4.76	0.8	3.81
DNMG150602-FP	F	●	●	12.7	6.35	0.2	5.16	WNMG080402-FP	F	●	●	12.7	4.76	0.2	5.16
DNMG150604-FP	F	●	●	12.7	6.35	0.4	5.16	WNMG080404-FP	F	●	●	12.7	4.76	0.4	5.16
DNMG150608-FP	F	●	●	12.7	6.35	0.8	5.16	WNMG080408-FP	F	●	●	12.7	4.76	0.8	5.16
SNMG120404-FP	F	●	●	12.7	4.76	0.4	5.16								
SNMG120408-FP	F	●	●	12.7	4.76	0.8	5.16								

● : Inventory maintained in Japan.

Recommended Cutting Conditions

Work Material		Hardness	Cutting Range		Grade	Breaker	vc (m/min)	f (mm/rev)	ap
P	Carbon Steel • Alloy Steel	180—280HB	Finish Cutting	Stable Cutting	NX2525	FP	210—300	0.08—0.25	0.10—1.00
				General Cutting	MP3025	FP	215—330	0.08—0.25	0.10—1.00

For Your Safety

●Don't handle inserts and chips without gloves. ●Please machine within the recommended application range and exchange expired tools with new ones in advance of breakage. ●Please use safety covers and wear safety glasses. ●When using compounded cutting oils, please take fire precautions. ●When attaching inserts or spare parts, please use only the correct wrench or driver. ●When using rotating tools, please make a trial run to check run-out, vibration and abnormal sounds etc.

MITSUBISHI MATERIALS CORPORATION

MITSUBISHI MATERIALS CORPORATION

Overseas Sales Dept, Asian Region

KFC bldg., 8F, 1-6-1 Yokoami, Sumida-ku, Tokyo 130-0015, Japan
TEL +81-3-5819-8771 FAX +81-3-5819-8774

Overseas Sales Dept, European & American Region

KFC bldg., 8F, 1-6-1 Yokoami, Sumida-ku, Tokyo 130-0015, Japan
TEL +81-3-5819-8772 FAX +81-3-5819-8774

<http://www.mitsubishicarbide.com/en/>
(Tools specifications subject to change without notice.)