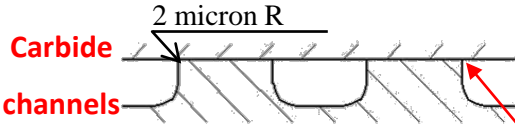


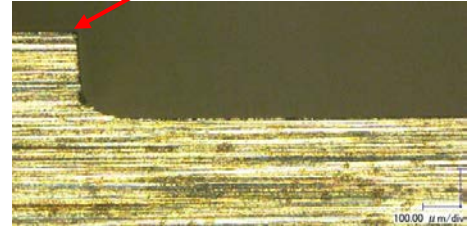
Stripe Coating Die

Shimless Coating with Tungsten Carbide Lips

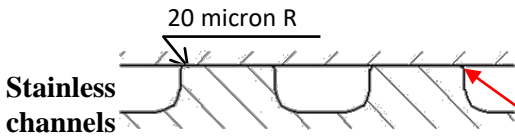


Low overflow due to sharp corner radius

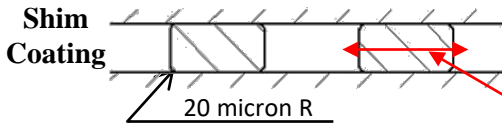
Edge radius of 2 microns!



[Micrograph : Tungsten Carbide lip]

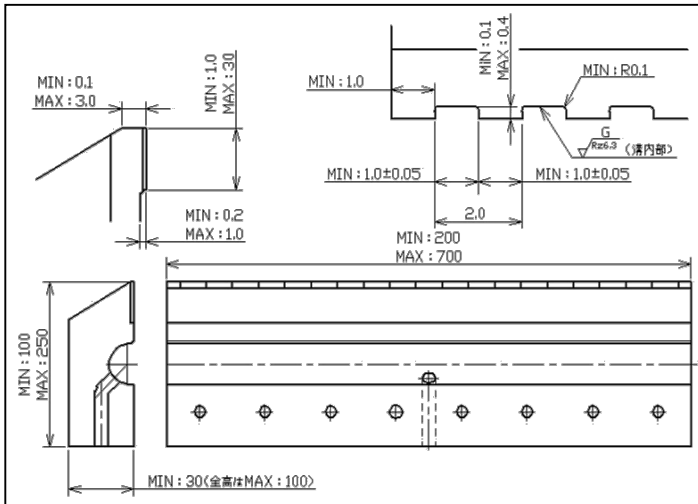


High risk of overflow due to rounded corner radius



Stripe thickness and width variation due to shim vibration

Die and Cavity Design (200mm – 700mm) - Loaner Available



Channels are directly designed on tungsten carbide lips



**Cavity Design
Outflow Model,
Half Die**

