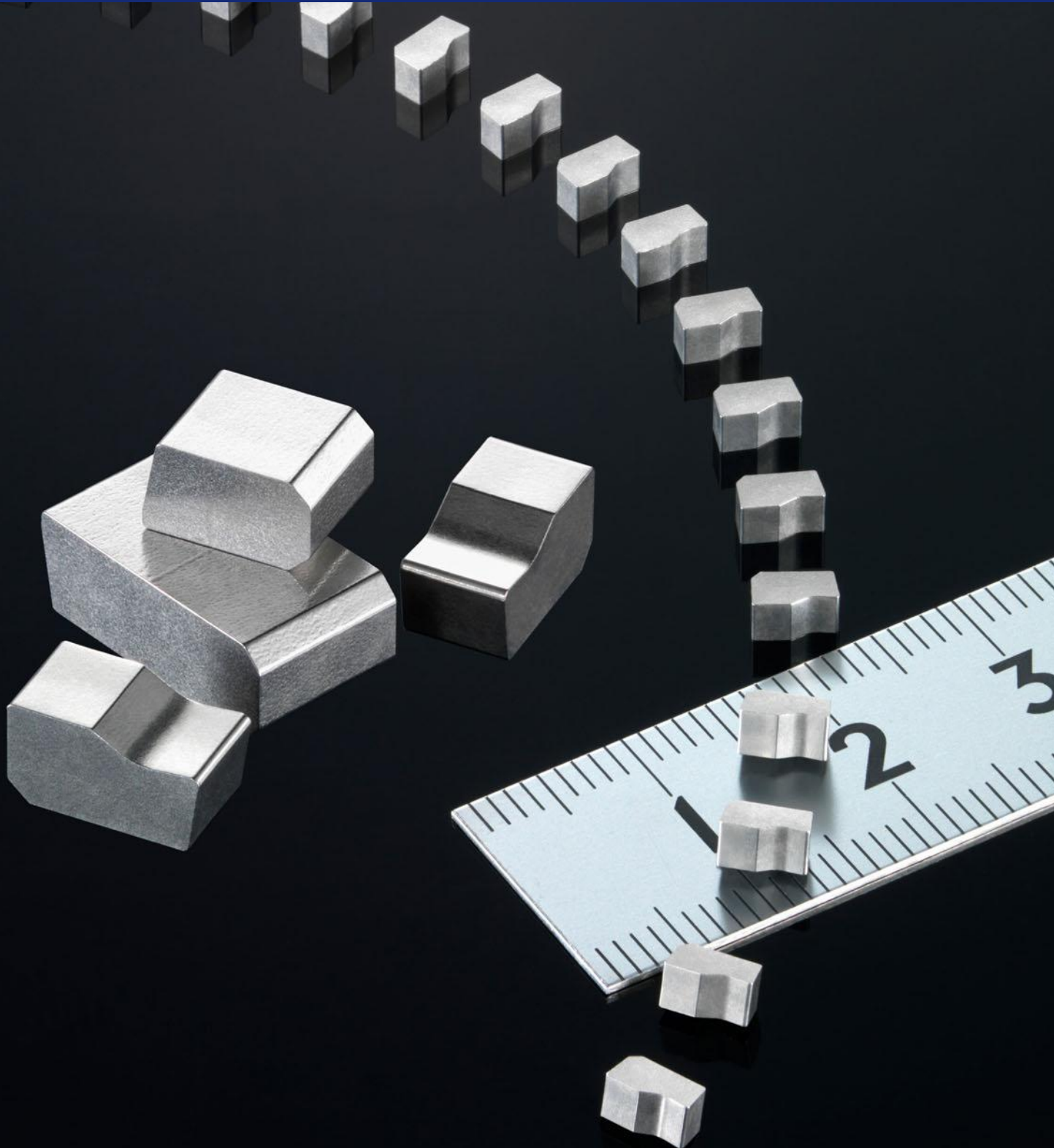


丸鋸用チップ素材

TIP MATERIALS for CIRCULAR SAW

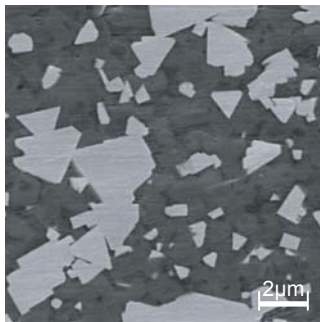


超硬合金材種 CEMENTED CARBIDE GRADE

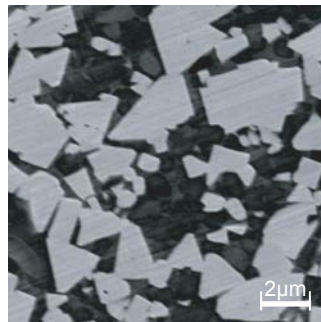
材種一覧 Grade classification

ISO	材種 Grade	Co量 Cobalt content (mass%)	硬さ Hardness		抗折力 TRS (GPa)	特徴 Features		
			(HV)	(HRA)				
P	P30	ZU525H	12.5	1000	90.5	2.1	耐摩耗性に優れ、鋼・ステンレス鋼の連続、断続加工に最適。 Excellent wear resistance. Suitable for steel and stainless steel continuous-interrupted machining.	
	P40	ZN520	12.0	850	89.3	2.2	耐欠損性に優れ、鋼・ステンレス鋼の強断続加工に最適。 Excellent fracture resistance. Suitable for steel and stainless steel heavy-interrupted machining.	
K	K10	HTi10	6.0	1700	92.0	2.0	耐摩耗性に優れ、鋳鉄・非鉄金属の連続加工に最適。 Excellent wear resistance. Suitable for cast iron and non-ferrous metal continuous machining.	
	K20	TF15	10.0	1550	91.0	2.5	耐欠損性に優れ、鋳鉄・非鉄金属の連続、断続加工に最適。 Excellent fracture resistance. Suitable for cast iron and non-ferrous metal continuous-interrupted machining.	

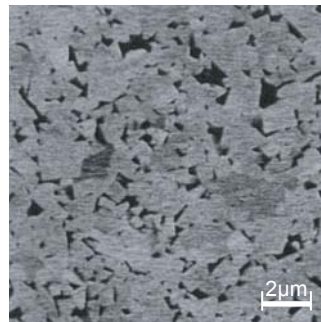
組織比較 Comparison of structure



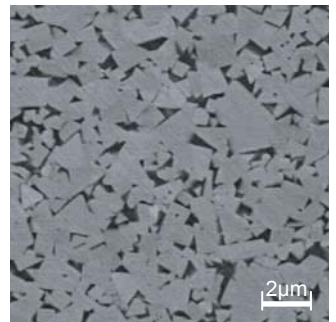
ZU525H



ZN520



HTi10



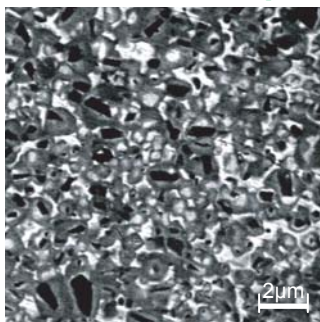
TF15

サーメット材種 CERMET GRADE

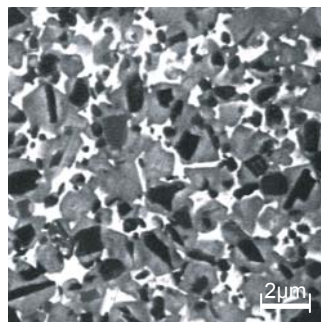
材種一覧 Grade classification

ISO	材種 Grade	含有量 (%) Content			硬さ Hardness		特徴 Features		
		TiCN	Co+Ni	その他 Other	(HV)	(HRA)			
P	P20	NX55	49	18	33	1600	91.2	耐摩耗性に優れ、鋼の連続加工に最適。 Excellent wear resistance. Suitable for steel continuous machining.	
	P20	TBF61	53	19	28	1000	90.5	耐熱衝撃性と耐欠損性に優れ、鋼の連続加工に最適。 Excellent thermal shock and fracture resistance. Suitable for steel continuous machining.	

組織比較 Comparison of structure

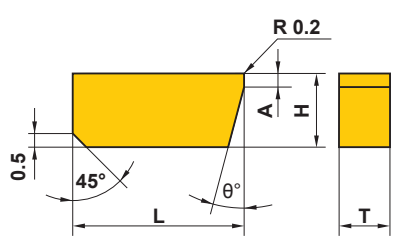
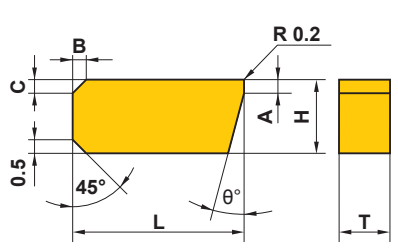
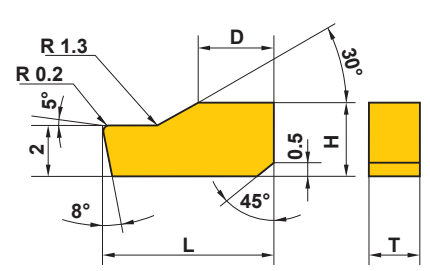


NX55



TBF61

標準チップ Standard tips

形状 Geometry	呼び記号 Order number	寸法 (mm) Dimensions									
		L		H		T	θ°	A	B	C	D
SBAタイプ SBA type 	SBA-4x1.5xTx10%	4	±0.2	1.5	±0.2	2-5	10	0.5	-	-	-
	-4x2xTx15%	4	±0.2	2	±0.2	2-5	15	0.5	-	-	-
	-5x1.5xTx20%	5	±0.2	1.5	±0.2	2-5	20	0.5	-	-	-
	-5x2xTx15%	5	±0.2	2	±0.2	2-5	15	0.5	-	-	-
	-5x2.5xT	5	±0.2	2.5	±0.2	2-5	0	-	-	-	-
	-5x2.5xTx8%	5	±0.2	2.5	±0.2	2-5	8	0.5	-	-	-
	-5x3xTx8%	5	±0.2	3	±0.2	2-5	8	0.5	-	-	-
	-6x2xTx8%	6	±0.2	2	±0.2	2-5	8	0.5	-	-	-
	-6x2xTx45%	6	±0.2	2	±0.2	2-5	45	1.5	-	-	-
	-7x2.2xTx8%	7	±0.2	2.2	±0.2	2-5	8	0.5	-	-	-
	-7x2.5xT	7	±0.2	2.5	±0.2	2-5	0	-	-	-	-
	-7x2.5xTx8%	7	±0.2	2.5	±0.2	2-5	8	0.5	-	-	-
	-7x2.5xTx20%	7	±0.2	2.5	±0.2	2-5	20	0.5	-	-	-
	-7x3xT	7	±0.2	3	±0.2	2-5	0	-	-	-	-
-9x3xTx20%	9	±0.2	3	±0.2	2-5	20	0.5	-	-	-	
SBBタイプ SBB type 	SBB-4x1.8xTx15%	4	±0.2	1.8	±0.2	2-5	15	0.5	1	0.5	-
	-4x2xTx15%	4	±0.2	2	±0.2	2-5	15	0.5	1	0.5	-
	-4x2.3xTx10%	4	±0.2	2.3	±0.2	2-5	10	0.5	0.5	0.5	-
	-5x1.8xTx15%	5	±0.2	1.8	±0.2	2-5	15	0.5	1	0.5	-
	-5x2.3xTx10%	5	±0.2	2.3	±0.2	2-5	10	0.5	0.5	0.5	-
	-6x2xTx15%	6	±0.2	2	±0.2	2-5	15	0.5	1	0.5	-
	-6x2.3xTx10%	6	±0.2	2.3	±0.2	2-5	10	0.5	0.5	0.5	-
	-7x2.3xTx10%	7	±0.2	2.3	±0.2	2-5	10	0.5	0.5	0.5	-
-7x2.5xTx10%	7	±0.2	2.5	±0.2	2-5	10	0.5	0.5	0.5	-	
SFAタイプ SFA type 	SFA-4x2.5xT	4	±0.2	2.5	±0.2	2-5	-	-	-	-	1.8
	-4.5x2.5xT	4.5	±0.2	2.5	±0.2	2-5	-	-	-	-	2
	-5x2.5xT	5	±0.2	2.5	±0.2	2-5	-	-	-	-	2.2

注1) ○%は、 θ° を示す。

注2) 標準チップ以外の形状についても都度ご相談に応じさせていただきます。

Note1) ○% shows θ° .

Note2) Please contact us for any geometry.



MITSUBISHI MATERIALS **CARBIDE BLANK**

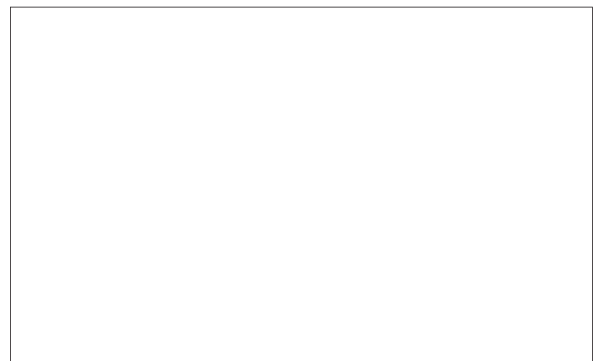
三菱マテリアル株式会社

〒130-0015
東京都墨田区横網1-6-1 国際ファッションセンタービル8階
超硬製品事業部 販売統括2部
工具素材グループ
TEL 03-5819-5315 FAX 03-5819-5310

MITSUBISHI MATERIALS CORPORATION

ADVANCED MATERIALS & TOOLS COMPANY
KFC BLDG., 8F, 1-6-1, YOKOAMI, SUMIDA-KU, TOKYO 130-0015, JAPAN
TEL +81-3-5819-5315 FAX +81-3-5819-5310

<http://blank.mitsubishicarbide.com>



(仕様はお断りせずに変更する場合がありますのでご了承ください)

