

# ***MICRO CASING BIT***

## **Straighter - Deeper Holes with Higher Productivity**

### **STANDARD 2" & 2.5" MCB SYSTEM (For Face bolting)**

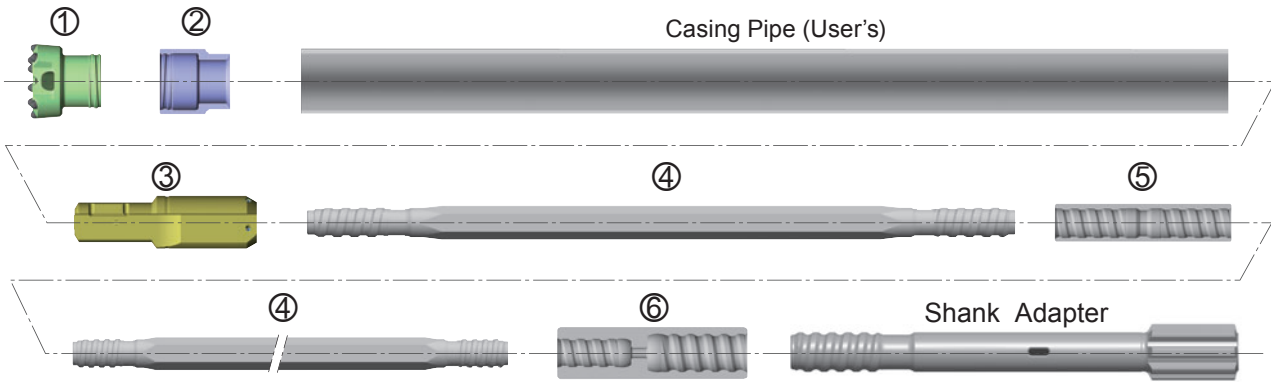
- Smallest concentrical drilling system
- Applicable for longer holes such as face bolting, geological survey and drainage holes
- 50m horizontal hole drilling has been recorded in Japan as longest drilled hole
- Easiest handling by smallest diameter and light weight
- Achieving high penetration rate



### **STANDARD 3" & 4" UMB SYSTEM (For Fore piling and Roof bolting)**

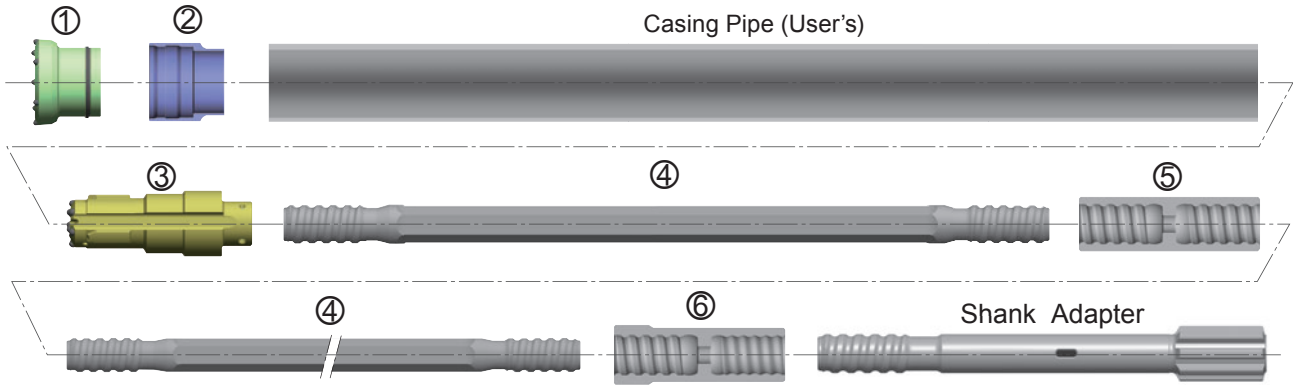
- Established UMB system for All Ground Fasten method
- Ring bit has a unique connection
- This system has best record at various rock condition in Japan

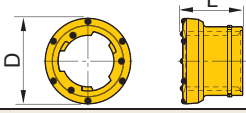
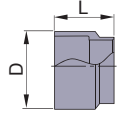
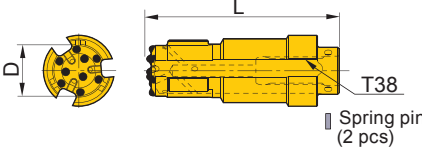
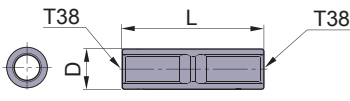
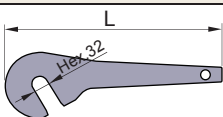
# STANDARD 2" & 2.5" MCB SYSTEM ( For Face Bolting)



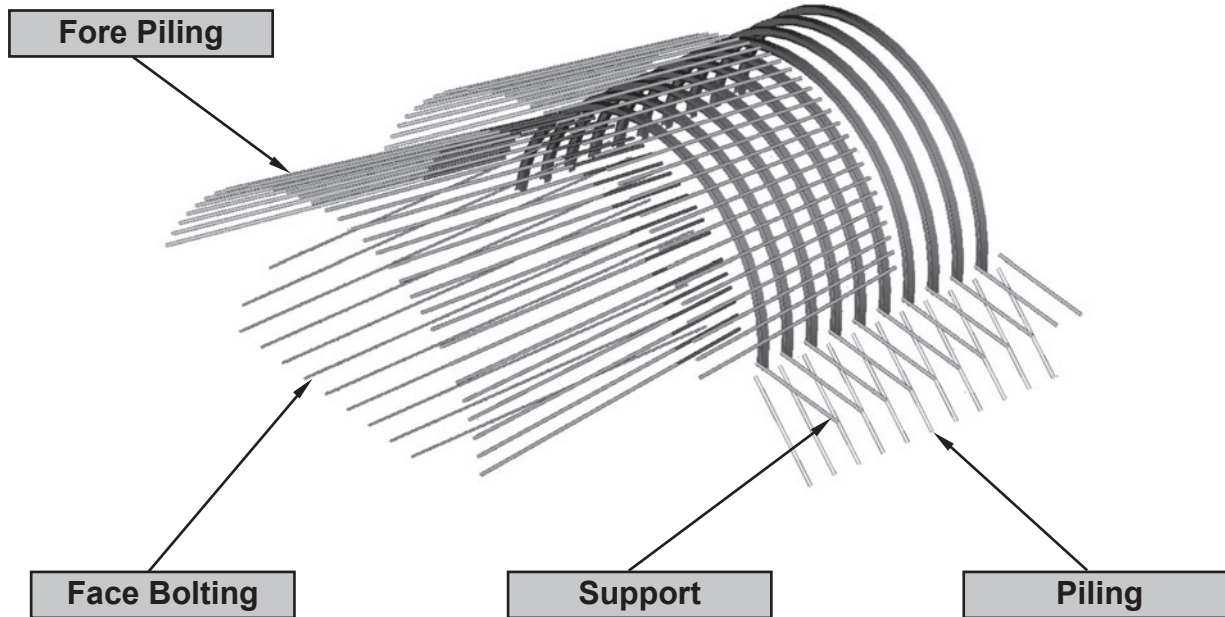
① Single Pass Bit	Casing Pipe		Gauge Dia. (D)		Length (L)		Weight		Part No.		
	Outer Dia.	Wall Max. Thickness	mm	in.	mm	in.	kg	lb			
	60.5 (2.38")	5.5 (0.22")	70	2.76"	86.7	3.41"	1.0	2.2	<b>MC50P70BBC795</b>		
	76.3 (3.00")	5.2 (0.20")	88	3.46"	87.2	3.43"	1.6	3.5	<b>MC65P88BBC705</b>		
② Casing Shoe	Casing Pipe		Outer Dia. (D)		Length (L)		Weight		Part No.		
	Outer Dia.	Wall Max. Thickness	mm	in.	mm	in.	kg	lb			
	60.5 (2.38")	5.5 (0.22")	60.5	2.38"	82	3.23"	0.6	1.3	<b>MC50TOP-796</b>		
	76.3 (3.00")	5.2 (0.20")	76.3	3.00"	82	3.23"	0.9	2.0	<b>MC65TOP-706</b>		
③ Shank Device	Casing Pipe		Guide Dia. (D)		Length (L)		Weight		Part No.		
	Outer Dia.	Wall Max. Thickness	mm	in.	mm	in.	kg	lb			
	60.5 (2.38")	5.5 (0.22")	46.5	1.83"	215	8.46"	1.35	3.0	<b>MC50M28-794</b> (Spring Pin: Φ6x25)		
	76.3 (3.00")	5.2 (0.20")	62.5	2.46"	215	8.46"	2.6	5.7	<b>MC65M28-704</b> (Spring Pin: Φ6x32)		
④ Extension Rod	Casing Pipe		Body Section		Length (L)		Weight		Part No.		
	Outer Dia.	Wall Max. Thickness	mm	in.	mm	in.	kg	lb			
		60.5 (2.38")	5.5 (0.22")	Hex.28		3050	10'	14.4		31.7	<b>EH28M28-3050L</b>
		76.3 (3.00")	5.2 (0.20")	Hex.28		3660	12'	17.2		37.8	<b>EH28M28-3660L</b>
			Hex.28		4000	13'31"	18.9	41.6	<b>EH28M28-4000L</b>		
⑤ Coupling Sleeve	Casing Pipe		Outer Dia. (D)		Length (L)		Weight		Part No.		
	Outer Dia.	Wall Max. Thickness	mm	in.	mm	in.	kg	lb			
			38	1.50"	160	6.30"	0.7	1.5	<b>CM28AG</b>		
⑥ Crossover Coupling	Casing Pipe		Outer Dia. (D)		Length (L)		Weight		Part No.		
	Outer Dia.	Wall Max. Thickness	mm	in.	mm	in.	kg	lb			
		60.5 (2.38")	5.5 (0.22")	54	2.13"	173	6.81"	2.2		4.8	<b>CM38M28AG</b>
		76.3 (3.00")	5.2 (0.20")	54	2.13"	180	7.09"	2.1		4.6	<b>CR38M28AG</b>
			60	2.36"	189	7.44"	2.8	6.2	<b>CM45M28AG</b>		
Rod Wrench	Casing Pipe		Body Section		Length (L)		Weight		Part No.		
	Outer Dia.	Wall Max. Thickness	mm	in.	mm	in.	kg	lb			
			Hex.28		430	16.93"	3.8	8.4	<b>RW-H28</b>		

# STANDARD 3" & 4" UMB SYSTEM ( For Fore piling and Roof bolting)



① Ring Bit	Casing Pipe		Gauge Dia. (D)		Length (L)		Weight		Part No.	
	Outer Dia.	Wall Max. Thickness	mm	in.	mm	in.	kg	lb		
	89.1 (3.51")	5.5 (0.22")	100	3.94"	82.2	3.24"	1.6	3.5	<b>UL100BB56C680</b>	
	114.3 (4.50")	8.0 (0.31")	126	4.96"	92.0	3.62"	2.7	5.9	<b>UL125BB76C348</b>	
② Casing Shoe	Casing Pipe		Outer Dia. (D)		Length (L)		Weight		Part No.	
	Outer Dia.	Wall Max. Thickness	mm	in.	mm	in.	kg	lb		
	89.1 (3.51")	5.5 (0.22")	89.1	3.51"	86	3.39"	0.9	2.0	<b>UTOP66-678</b>	
	114.3 (4.50")	8.0 (0.31")	114.3	4.50"	100	3.94"	1.5	3.3	<b>UTOP87-551</b>	
③ Pilot Bit	Casing Pipe		Guide Dia. (D)		Length (L)		Weight		Part No.	
	Outer Dia.	Wall Max. Thickness	mm	in.	mm	in.	kg	lb		
	89.1 (3.51")	5.5 (0.22")	76	2.99"	224.8	8.85"	3.5	7.7	<b>UD38MP53BB-689</b> (Spring Pin: Φ8x45)	
	114.3 (4.50")	8.0 (0.31")	96	3.78"	246	9.69"	7.5	16.5	<b>UD38MP70BB-548</b> (Spring Pin: Φ8x45)	
④ Extension Rod	Casing Pipe		Body Section		Length (L)		Weight		Part No.	
	Outer Dia.	Wall Max. Thickness	mm	in.	mm	in.	kg	lb		
	89.1 (3.51")	5.5 (0.22")	Hex.32		3050	10'	17.7	38.9		<b>EH32M38-3050</b>
	114.3 (4.50")	8.0 (0.31")	Hex.32		3660	12'	21.4	47.1		<b>EH32M38-3660</b>
		Hex.32		4000	13'31"	23.5	51.7	<b>EH32M38-4000</b>		
⑤ Coupling Sleeve	Casing Pipe		Outer Dia. (D)		Length (L)		Weight		Part No.	
	Outer Dia.	Wall Max. Thickness	mm	in.	mm	in.	kg	lb		
	89.1 (3.51")	5.5 (0.22")	54	2.13"	190	7.48"	1.9	4.2	<b>CM38AGF</b>	
⑥ Crossover Coupling	Casing Pipe		Outer Dia. (D)		Length (L)		Weight		Part No.	
	Outer Dia.	Wall Max. Thickness	mm	in.	mm	in.	kg	lb		
	89.1 (3.51")	5.5 (0.22")	60	2.36"	195	7.68"	2.2	4.8		<b>CR38M38AG</b>
		66	2.60"	215	8.46"	3.1	6.8	<b>CM45M38AG</b>		
Rod Wrench	Casing Pipe		Body Section		Length (L)		Weight		Part No.	
	Outer Dia.	Wall Max. Thickness	mm	in.	mm	in.	kg	lb		
	89.1 (3.51")	5.5 (0.22")	Hex.32		430	16.93"	5.2	11.4	<b>RW-H32</b>	

# APPLICATIONS



## ● MCB system can be applied for Drainage and Exploration



## MITSUBISHI MATERIALS CORPORATION

JAPAN / ROCK TOOLS

Website



MITSUBISHI MATERIALS CORPORATION

OVERSEAS OPERATIONS CENTER

KFC bldg., 7F, 1-6-1, Yokoami, Sumida-ku, Tokyo 130-0015, Japan

TEL +81-3-5819-8723 FAX +81-3-5819-5259

E-Mail: [rocktool@mmc.co.jp](mailto:rocktool@mmc.co.jp)

<http://mrt.mitsubishicarbide.com>

### Subsidiaries of MITSUBISHI MATERIALS CORPORATION

U.S.A. **MITSUBISHI MATERIALS U.S.A. CORPORATION**  
2690 Salisbury Highway, Statesville, NC 28677, U.S.A.  
TEL +1-800-423-1358 FAX +1-888-834-2248  
E-Mail: [mmusclt@mmus.com](mailto:mmusclt@mmus.com)

Australia **MITSUBISHI MATERIALS TRADING CORPORATION  
PERTH BRANCH**  
Unit1, 58 Catalano Circuit Canning Vale, WA 6155 Australia  
TEL +61-8-6258-7200 FAX +61-8-6258-5614  
E-Mail: [admin@mmtau.com](mailto:admin@mmtau.com)

Germany **MMC HARTMETALL GMBH**  
Comeniusstr. 2,40670 Meerbusch, Germany  
TEL +49-2159-9189-32 FAX +49-2159-9189-30079  
E-Mail: [rocktools@mmchg.de](mailto:rocktools@mmchg.de)

South Korea **MITSUBISHI MATERIALS TRADING CORPORATION  
SEOUL BRANCH**  
#1812, Samsung Cheil Bldg, 309, Teheran-Ro,  
Gangnam-Gu, Seoul, 06151, Korea  
TEL +82-2-3474-2331 FAX +82-2-572-2834

Brazil **MMC METAL DO BRASIL LTDA.**  
Rua Cincinato Braga, 340 13º andar. Bela Vista-  
CEP 01333-010 São Paulo-SP., BRASIL  
TEL +55-11-3262-5095 FAX +55-11-3285-4906  
E-Mail: [mubr@mubr.com.br](mailto:mubr@mubr.com.br)

Singapore **MITSUBISHI MATERIALS TRADING CORPORATION  
SINGAPORE BRANCH**  
10 Anson Road, #32-09 International Plaza,  
079903 Singapore  
TEL +65-6221-7233 FAX +65-6325-4220

Mexico **MMC METAL DE MEXICO S.A. DE C.V.**  
Av. La Canada No.16 Parque Industrial Bernardo Quintana  
El marques, Queretaro.  
TEL +52-442-221-6136 +52-442-221-6137  
FAX +52-442-221-6134  
E-Mail: [gonzalez@mmcex.com](mailto:gonzalez@mmcex.com)

China **MITSUBISHI MATERIALS (Shanghai) CORPORATION**  
Room 3911, UNITED PLAZA 1468, Nanjing Road West,  
Shanghai, 200040 China  
TEL +86-21-6235-0745 FAX +86-21-6235-0741