

CEMENTED CARBIDE RODS FOR PCB DRILL

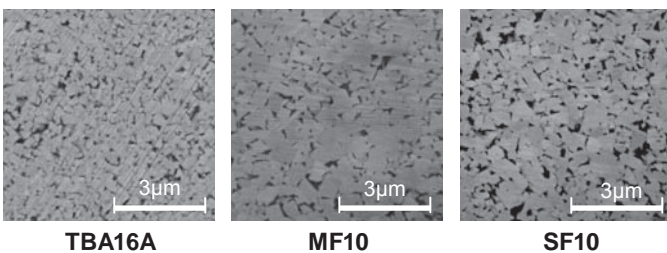
Excellent breakage resistance and possible to make the hole location accuracy.



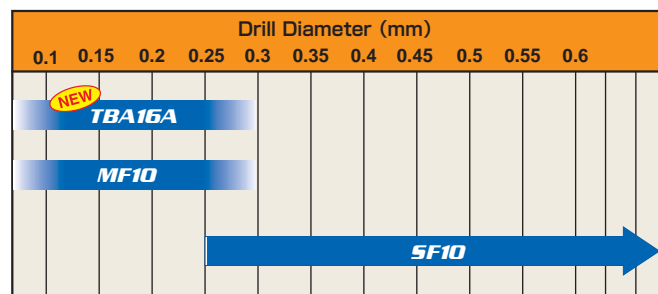
Grade Classification

| Grade | Grain size (μm) | Cobalt content (mass%) | Hardness | | TRS (GPa) | Features |
|----------------------|-----------------|------------------------|----------|-------|-----------|---|
| | | | (HV) | (HRA) | | |
| NEW TBA16A | <0.4 | 8 | 2000 | 93.5 | 5.3 | TBA16A has exceptional advantage of high strength with optimizing high breakage resistance. Suitable for the drill diameter less than 0.3mm. |
| MF10 | <0.6 | 8 | 1900 | 93.0 | 4.0 | MF10 grade has exceptional advantages of high hardness with optimizing high wear resistance. Suitable for PCB drill with the drill diameter of less than 0.3mm. |
| SF10 | <0.8 | 6 | 1830 | 92.7 | 3.8 | SF10 has exceptional advantage of high hardness with optimizing high wear resistance. Suitable for the drill diameter more than 0.25mm. |

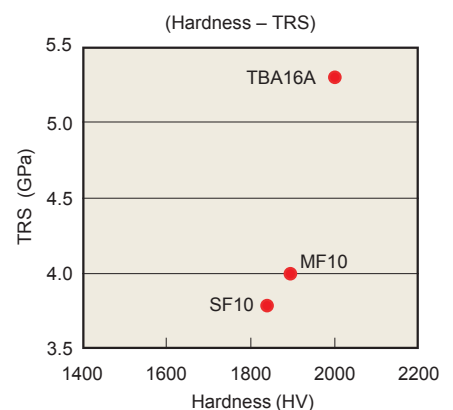
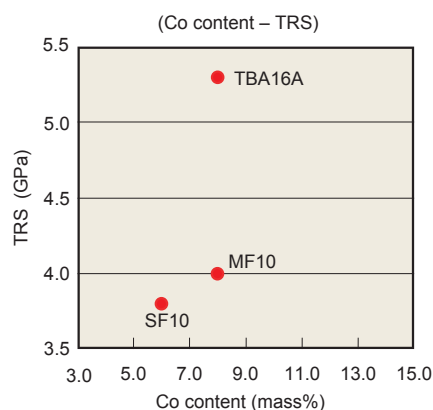
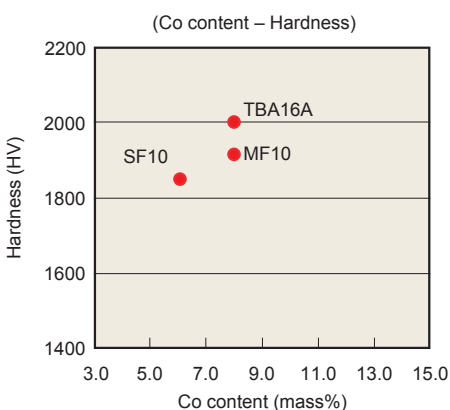
Comparison of Structure



Recommended Grades



Properties of Grade





MITSUBISHI MATERIALS CARBIDE BLANK

MITSUBISHI MATERIALS CORPORATION

ADVANCED MATERIALS & TOOLS COMPANY
KFC BLDG., 7F, 1-6-1, YOKOAMI, SUMIDA-KU, TOKYO 130-0015, JAPAN
TEL +81-3-5819-5316 FAX +81-3-5819-5310

<http://blank.mitsubishicarbide.com>

