

TAPER STANDARD

Fig.1
Bolt Grip Taper

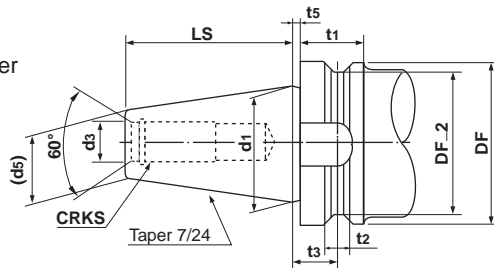
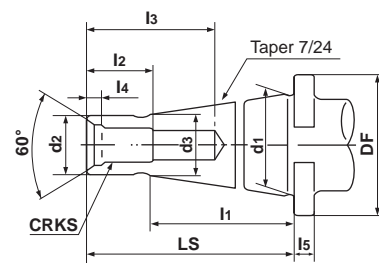


Fig.2
National Taper



● **Table 1 Bolt Grip Taper (Fig.1)**

Bearing Number	DF	DF_2	t1	t2	t3	t5	d1	d3	LS	CRKS	d5
BT35	53	43	20	10	13.0	2	38.1	13	56.5	M12x1.75	21.62
BT40	63	53	25	10	16.6	2	44.45	17	65.4	M16x2	25.3
BT45	85	73	30	12	21.2	3	57.15	21	82.8	M20x25	33.1
BT50	100	85	35	15	23.2	3	69.85	25	101.8	M24x3	40.1
BT60	155	135	45	20	28.2	3	107.95	31	161.8	M30x3.5	60.7

● **Table 2 National Taper (Fig.2)**

Bearing Number	d1	d2	LS	l1	CRKS		l2	l3	d3	l4	DF	l5
					Metric Screw	Wit Screw						
NT30	31.75	17.4	70	50	M12	W 1/2	24	50	16.5	6	50	8
NT40	44.45	25.3	95	67	M16	W 5/8	30	70	24	7	63	10
NT50	69.85	39.6	130	105	M24	W 1	45	90	38	11	100	13
NT60	107.95	60.2	210	165	M30	W 1 1/4	56	110	58	12	170	15

Fig.3
Morse Taper
(Shank with Tongue)

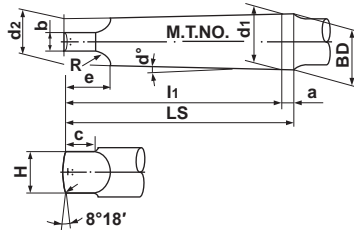
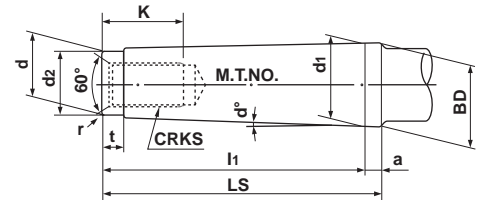


Fig.4
Morse Taper
(Shank with Screw)



● **Table 3 Shank with Tongue (Fig.3)**

Morse Taper Number	d1	a	BD	d2	H	l1	LS	d	c	e	R	r
0	9.045	3	9.201	6.104	6	56.5	59.5	3.9	6.5	10.5	4	1
1	12.065	3.5	12.240	8.972	8.7	62.0	65.5	5.2	8.5	13.5	5	1.2
2	17.780	5	18.030	14.034	13.5	75.0	80.0	6.3	10	16	6	1.6
3	23.825	5	24.076	19.107	18.5	94.0	99	7.9	13	20	7	2
4	31.267	6.5	31.605	25.164	24.5	117.5	124	11.9	16	24	8	2.5
5	44.399	6.5	44.741	36.531	35.7	149.5	156	15.9	19	29	10	3
6	63.348	8	63.765	52.399	51.0	210.0	218	19	27	40	13	4
7	83.058	10	83.578	68.185	66.8	286.0	296	28.6	35	54	19	5

● **Table 4 Shank with Screw (Fig.4)**

Morse Taper Number	d1	a	BD	d	d2	l1	LS	t	r	CRKS	K
0	9.045	3	9.201	6.442	6	50	53	4	0.2	—	—
1	12.065	3.5	12.240	9.396	9	53.5	57	5	0.2	M6	16
2	17.780	5	18.030	14.583	14	64	69	5	0.2	M10	24
3	23.825	5	24.076	19.759	19	81	86	7	0.6	M12	28
4	31.267	6.5	31.605	25.943	25	102.5	109	9	1.0	M16	32
5	44.399	6.5	44.741	37.584	35.7	129.5	136	9	2.5	M20	40
6	63.348	8	63.765	53.859	51	182	190	12	4.0	M24	50
7	83.058	10	83.578	70.052	65	250	260	18.5	5.0	M33	80