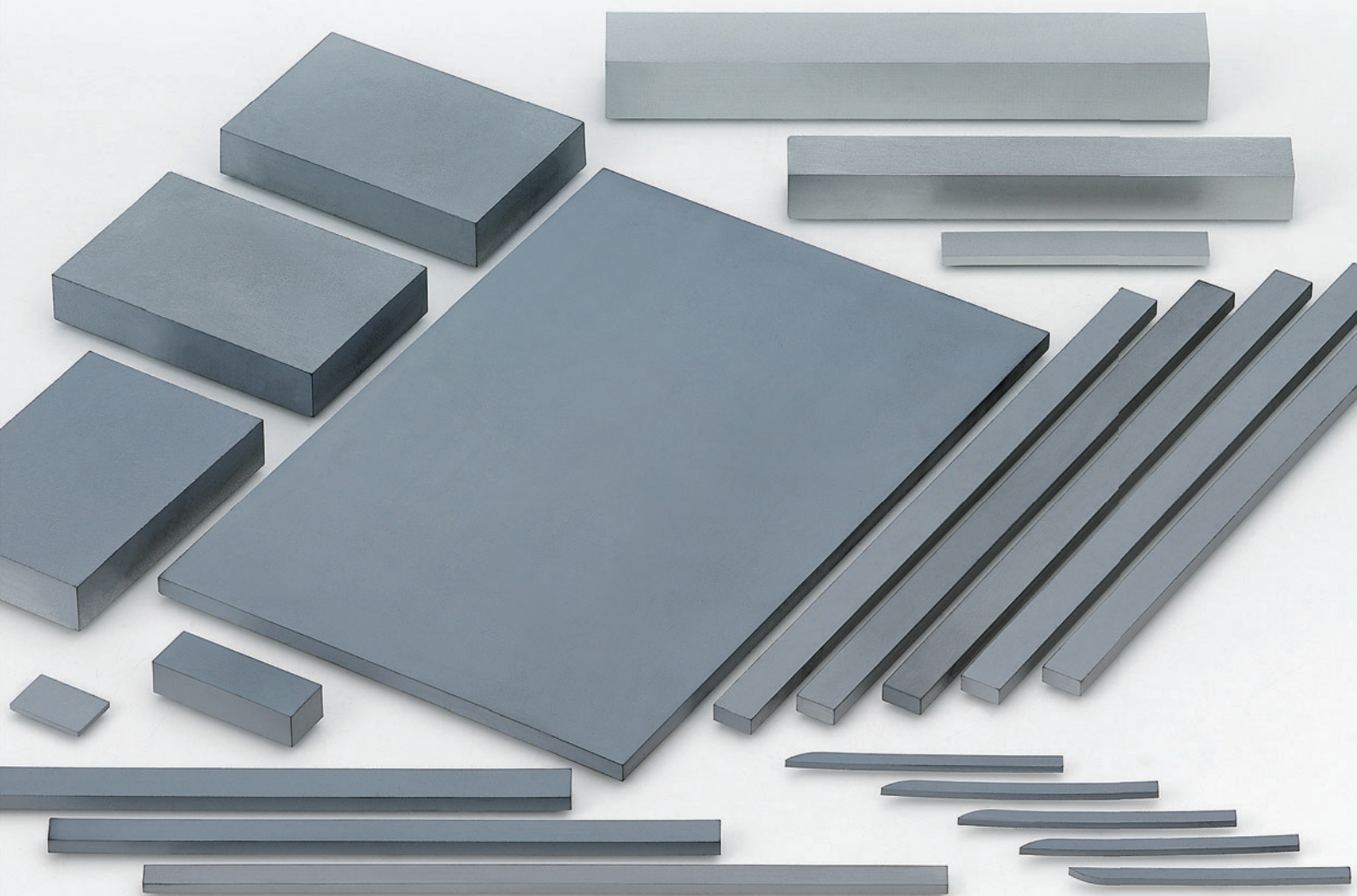


超硬合金板素材

CEMENTED CARBIDE PLATES

抜群の耐摩耗性、耐欠損性を発揮。

Excellent wear resistance and fracture resistance.

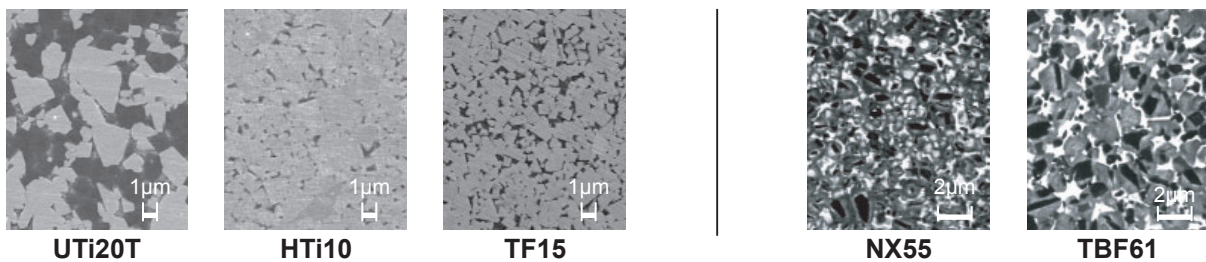


切削用素材 Carbide Materials (for cutting tools)

超硬合金材種一覧 Cemented carbide grade classification

ISO	被削材 Work material	材種 Grade	WC 粒径 Grain size (μm)	含有量 Content (mass%)			硬さ Hardness (HRA)	抗折力 TRS (GPa)	特徴 Features
				WC	Co	その他 Other			
P	鋼 Steel	UTi20T	2-3	Bal.	9	19	90.5	2.0	耐熱性、耐酸化性を向上させた中粒超硬合金であり、耐欠損性に優れています。 UTi20T grade has exceptional advantages of high fracture toughness with optimizing heat resistance and oxidation resistance.
M	ステンレス鋼 Stainless steel								
K	鑄鉄 ダクタイル鑄鉄 Cast iron Ductile cast iron	HTi10	<1.0	Bal.	6	1	92.0	3.2	硬さと抗折力に優れた微粒超硬合金です。 鑄鉄・非鉄金属の加工に最適です。 HTi10 grade has exceptional advantages of high hardness and strength.
N	非鉄金属 Non-ferrous metal								
S	耐熱合金 チタン合金 Heat resistant alloy Titanium alloy	TF15	<0.9	Bal.	10	-	91.0	4.0	硬さと靱性をバランスさせた超微粒超硬合金です。 シャープエッジが出やすく、刃先強度も高くなっています。 TF15 grade has exceptional advantages of high hardness and toughness with optimizing high breakage resistance and strong edge sharpness.

組織比較 Comparison of structure



サーメット材種一覧 (*自動盤バイト用チップに適用)

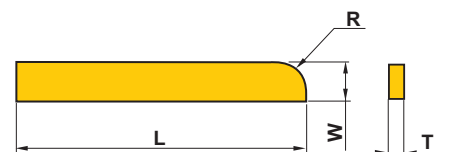
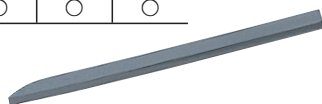
Cermet grade classification for automatic lathes

ISO	被削材 Work material	材種 Grade	含有量 Content(mass%)			硬さ Hardness (HRA)	特徴 Features
			TiCN	Co+Ni	その他 Other		
P	鋼 Steel	NX55	49	18	33	91.2	耐摩耗性に優れ、鋼の連続加工に最適。 Excellent wear resistance. Suitable for steel continuous machining.
		TBF61	53	19	28	90.5	耐熱衝撃性と耐欠損性に優れ、鋼の連続加工に最適。 Excellent thermal shock and fracture resistance. Suitable for steel continuous machining.

自動盤バイト用チップ Tips for automatic lathes

材種 Grade

UTi20T	HTi10	TF15	NX55	TBF61
○	○	○	○	○



呼び記号 Order Number	寸法 (mm) Dimensions				
	L	W	R	T	
TLR-15x3xR3	15 ±1.0	3 ±0.5	R3	2-6 +0.5/0	
-15x4xR3	15 ±1.0	4 ±0.5	R3	2-6 +0.5/0	
-20x2xR4	20 ±1.0	2 ±0.5	R4	2-4 +0.5/0	
-20x3xR3	20 ±1.0	3 ±0.5	R3	2-6 +0.5/0	
-20x4xR3	20 ±1.0	4 ±0.5	R3	2-6 +0.5/0	
-20x5xR3	20 ±1.0	5 ±0.5	R3	2-6 +0.5/0	

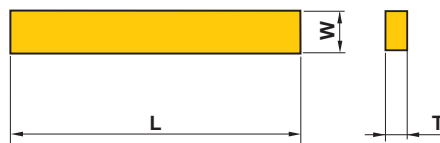
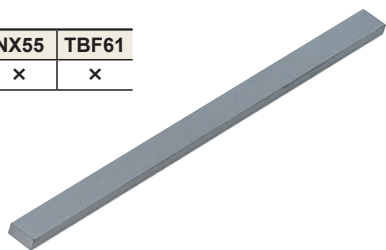
呼び記号 Order Number	寸法 (mm) Dimensions				
	L	W	R	T	
TLR-20x6xR3	20 ±1.0	6 ±0.5	R3	2-6 +0.5/0	
-25x4xR3	25 ±1.0	4 ±0.5	R3	2-6 +0.5/0	
-30x4xR3	30 ±2.0	4 ±0.5	R3	2-6 +0.5/0	
-30x3xR4	30 ±2.0	3 ±0.5	R4	2-6 +0.5/0	
-30x4xR4	30 ±2.0	4 ±0.5	R4	2-6 +0.5/0	

注) 寸法違い品についても都度ご相談に応じさせていただきます。
Note) Please contact us for any geometry.

超硬合金板素材 Cemented carbide plates

材種 Grade

UTi20T	HTi10	TF15	NX55	TBF61
○	○	○	×	×



呼び記号 Order Number	寸法 (mm) Dimensions					
	L		W		T	
TLB-8x3xT	8	±0.5	3	±0.3	2-4	+0.5 0
-8x5xT	8	±0.5	5	±0.3	2-7	+0.5 0
-8x6xT	8	±0.5	6	±0.3	2-8	+0.5 0
-8x7xT	8	±0.5	7	±0.3	2-8	+0.5 0
-8x8xT	8	±0.5	8	±0.3	2-8	+0.5 0
-9x6xT	9	±0.5	6	±0.3	2-8	+0.5 0
-9x7xT	9	±0.5	7	±0.3	2-8	+0.5 0
-9x8xT	9	±0.5	8	±0.3	2-6	+0.5 0
-10x2xT	10	±0.5	2	±0.3	2-4	+0.5 0
-10x3xT	10	±0.5	3	±0.3	2-8	+0.5 0
-10x4xT	10	±0.5	4	±0.3	2-8	+0.5 0
-10x5xT	10	±0.5	5	±0.3	2-8	+0.5 0
-10x6xT	10	±0.5	6	±0.3	2-4	+0.5 0
-10x7xT	10	±0.5	7	±0.3	2-8	+0.5 0
-10x8xT	10	±0.5	8	±0.3	2-7	+0.5 0
-10x9xT	10	±0.5	9	±0.3	2-6	+0.5 0
-10x10xT	10	±0.5	10	±0.3	2-10	+0.5 0
-11x4xT	11	±0.5	4	±0.3	2-7	+0.5 0
-11x5xT	11	±0.5	5	±0.3	2-8	+0.5 0
-11x6xT	11	±0.5	6	±0.3	2-6	+0.5 0
-11x8xT	11	±0.5	8	±0.3	2-8	+0.5 0
-11x9xT	11	±0.5	9	±0.3	2-8	+0.5 0
-11x11xT	11	±0.5	11	±0.4	2-8	+0.5 0
-12x2xT	12	±0.5	2	±0.3	2-7	+0.5 0
-12x5xT	12	±0.5	5	±0.3	2-8	+0.5 0
-12x7xT	12	±0.5	7	±0.3	2-8	+0.5 0
-12x8xT	12	±0.5	8	±0.3	2-8	+0.5 0
-12x9xT	12	±0.5	9	±0.3	2-8	+0.5 0
-12x10xT	12	±0.5	10	±0.3	2-10	+0.5 0
-12x12xT	12	±0.5	12	±0.4	2-8	+0.5 0
-13x4xT	13	±0.5	4	±0.3	2-6	+0.5 0
-13x6xT	13	±0.5	6	±0.3	2-8	+0.5 0
-13x7xT	13	±0.5	7	±0.3	2-8	+0.5 0
-13x8xT	13	±0.5	8	±0.3	2-8	+0.5 0
-13x9xT	13	±0.5	9	±0.3	2-7	+0.5 0
-13x10xT	13	±0.5	10	±0.3	2-8	+0.5 0
-13x12xT	13	±0.5	12	±0.4	2-10	+0.5 0
-13x13xT	13	±0.5	13	±0.4	2-7	+0.5 0
-14x3xT	14	±0.5	3	±0.3	2-8	+0.5 0
-14x5xT	14	±0.5	5	±0.3	2-8	+0.5 0

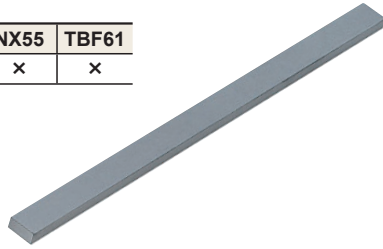
呼び記号 Order Number	寸法 (mm) Dimensions					
	L		W		T	
TLB-14x6xT	14	±0.5	6	±0.3	2-8	+0.5 0
-14x8xT	14	±0.5	8	±0.3	2-8	+0.5 0
-14x10xT	14	±0.5	10	±0.3	2-9	+0.5 0
-15x3xT	15	±0.5	3	±0.3	2-4	+0.5 0
-15x4xT	15	±0.5	4	±0.3	2-4	+0.5 0
-15x5xT	15	±0.5	5	±0.3	2-8	+0.5 0
-15x6xT	15	±0.5	6	±0.3	2-8	+0.5 0
-15x7xT	15	±0.5	7	±0.3	2-8	+0.5 0
-15x8xT	15	±0.5	8	±0.3	2-7	+0.5 0
-15x9xT	15	±0.5	9	±0.3	2-8	+0.5 0
-15x10xT	15	±0.5	10	±0.3	2-7	+0.5 0
-15x12xT	15	±0.5	12	±0.4	2-7	+0.5 0
-15x13xT	15	±0.5	13	±0.4	2-8	+0.5 0
-16x3xT	16	±0.5	3	±0.3	2-8	+0.5 0
-16x4xT	16	±0.5	4	±0.3	2-8	+0.5 0
-16x5xT	16	±0.5	5	±0.3	2-4	+0.5 0
-16x6xT	16	±0.5	6	±0.3	2-8	+0.5 0
-16x7xT	16	±0.5	7	±0.3	2-8	+0.5 0
-16x8xT	16	±0.5	8	±0.3	2-8	+0.5 0
-16x9xT	16	±0.5	9	±0.3	2-8	+0.5 0
-16x10xT	16	±0.5	10	±0.3	2-8	+0.5 0
-16x11xT	16	±0.5	11	±0.4	2-6	+0.5 0
-16x14xT	16	±0.5	14	±0.4	2-8	+0.5 0
-16x15xT	16	±0.5	15	±0.4	2-7	+0.5 0
-16x16xT	16	±0.5	16	±0.4	2-10	+0.5 0
-17x3xT	17	±0.5	3	±0.3	2-8	+0.5 0
-17x4xT	17	±0.5	4	±0.3	2-8	+0.5 0
-17x5xT	17	±0.5	5	±0.3	2-8	+0.5 0
-17x6xT	17	±0.5	6	±0.3	2-8	+0.5 0
-17x8xT	17	±0.5	8	±0.3	2-8	+0.5 0
-17x10xT	17	±0.5	10	±0.3	2-10	+0.5 0
-17x11xT	17	±0.5	11	±0.4	2-8	+0.5 0
-17x13xT	17	±0.5	13	±0.4	2-8	+0.5 0
-18x3xT	18	±0.5	3	±0.3	2-8	+0.5 0
-18x4xT	18	±0.5	4	±0.3	2-7	+0.5 0
-18x5xT	18	±0.5	5	±0.3	2-7	+0.5 0
-18x6xT	18	±0.5	6	±0.3	2-8	+0.5 0
-18x7xT	18	±0.5	7	±0.3	2-8	+0.5 0
-18x9xT	18	±0.5	9	±0.3	2-8	+0.5 0
-18x10xT	18	±0.5	10	±0.3	2-8	+0.5 0

注) 寸法違い品についても都度ご相談に応じさせていただきます。
 Note) Please contact us for any geometry.

超硬合金板素材 Cemented carbide plates

材種 Grade

UTi20T	HTi10	TF15	NX55	TBF61
○	○	○	×	×



呼び記号 Order Number	寸法 (mm) Dimensions					
	L		W		T	
TLB-18x13xT	18	±0.5	13	±0.4	2-8	+0.5 0
-18x15xT	18	±0.5	15	±0.4	2-8	+0.5 0
-18x18xT	18	±0.5	18	±0.4	2-12	+0.5 0
-19x5xT	19	±0.5	5	±0.3	2-8	+0.5 0
-19x8xT	19	±0.5	8	±0.3	2-8	+0.5 0
-19x11xT	19	±0.5	11	±0.4	2-8	+0.5 0
-19x13xT	19	±0.5	13	±0.4	2-8	+0.5 0
-20x2xT	20	±0.5	2	±0.3	2-4	+0.5 0
-20x3xT	20	±0.5	3	±0.3	2-5	+0.5 0
-20x4xT	20	±0.5	4	±0.3	2-7	+0.5 0
-20x5xT	20	±0.5	5	±0.3	2-8	+0.5 0
-20x6xT	20	±0.5	6	±0.3	2-8	+0.5 0
-20x7xT	20	±0.5	7	±0.3	2-8	+0.5 0
-20x8xT	20	±0.5	8	±0.3	2-7	+0.5 0
-20x9xT	20	±0.5	9	±0.3	2-8	+0.5 0
-20x10xT	20	±0.5	10	±0.3	2-8	+0.5 0
-20x12xT	20	±0.5	12	±0.4	2-8	+0.5 0
-20x15xT	20	±0.5	15	±0.4	2-12	+0.5 0
-20x18xT	20	±0.5	18	±0.4	2-12	+0.5 0
-20x20xT	20	±0.5	20	±0.4	2-12	+0.5 0
-21x3xT	21	±0.5	3	±0.3	2-7	+0.5 0
-21x7xT	21	±0.5	7	±0.3	2-7	+0.5 0
-21x8xT	21	±0.5	8	±0.3	2-8	+0.5 0
-21x9xT	21	±0.5	9	±0.3	2-8	+0.5 0
-21x13xT	21	±0.5	13	±0.4	2-7	+0.5 0
-21x20xT	21	±0.5	20	±0.4	2-12	+0.5 0
-21x21xT	21	±0.5	21	±0.4	2-12	+0.5 0
-22x3xT	22	±0.5	3	±0.3	2-6	+0.5 0
-22x5xT	22	±0.5	5	±0.3	2-8	+0.5 0
-22x8xT	22	±0.5	8	±0.3	2-8	+0.5 0
-22x12xT	22	±0.5	12	±0.4	2-8	+0.5 0
-22x15xT	22	±0.5	15	±0.4	2-8	+0.5 0
-22x22xT	22	±0.5	22	±0.4	2-26	+0.5 0
-23x4xT	23	±0.5	4	±0.3	2-7	+0.5 0
-23x8xT	23	±0.5	8	±0.3	2-8	+0.5 0
-23x14xT	23	±0.5	14	±0.4	2-12	+0.5 0
-24x10xT	24	±0.5	10	±0.3	2-8	+0.5 0
-24x12xT	24	±0.5	12	±0.4	2-6	+0.5 0
-24x24xT	24	±0.5	24	±0.4	2-12	+0.5 0
-25x4xT	25	±0.5	4	±0.3	2-8	+0.5 0

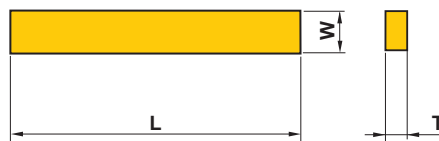
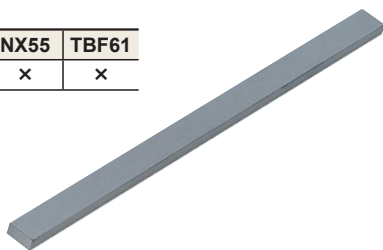
呼び記号 Order Number	寸法 (mm) Dimensions					
	L		W		T	
TLB-25x6xT	25	±0.5	6	±0.3	2-8	+0.5 0
-25x8xT	25	±0.5	8	±0.3	2-11	+0.5 0
-25x9xT	25	±0.5	9	±0.3	2-8	+0.5 0
-25x10xT	25	±0.5	10	±0.3	2-12	+0.5 0
-25x11xT	25	±0.5	11	±0.4	2-8	+0.5 0
-25x12xT	25	±0.5	12	±0.4	2-12	+0.5 0
-25x15xT	25	±0.5	15	±0.4	2-10	+0.5 0
-25x17xT	25	±0.5	17	±0.4	2-10	+0.5 0
-26x4xT	26	±0.5	4	±0.3	2-8	+0.5 0
-26x7xT	26	±0.5	7	±0.3	2-8	+0.5 0
-26x8xT	26	±0.5	8	±0.3	2-8	+0.5 0
-26x9xT	26	±0.5	9	±0.3	2-8	+0.5 0
-27x5xT	27	±0.5	5	±0.3	2-8	+0.5 0
-27x7xT	27	±0.5	7	±0.3	2-7	+0.5 0
-27x12xT	27	±0.5	12	±0.4	2-8	+0.5 0
-28x11xT	28	±0.5	11	±0.4	2-12	+0.5 0
-28x12xT	28	±0.5	12	±0.4	2-8	+0.5 0
-28x14xT	28	±0.5	14	±0.4	2-14	+0.5 0
-28x15xT	28	±0.5	15	±0.4	2-8	+0.5 0
-29x3xT	29	±0.5	3	±0.3	2-8	+0.5 0
-30x3xT	30	±0.5	3	±0.3	2-8	+0.5 0
-30x5xT	30	±0.5	5	±0.3	2-8	+0.5 0
-30x6xT	30	±0.5	6	±0.3	2-10	+0.5 0
-30x9xT	30	±0.5	9	±0.3	2-11	+0.5 0
-30x10xT	30	±0.5	10	±0.3	2-12	+0.5 0
-30x16xT	30	±0.5	16	±0.4	2-12	+0.5 0
-30x20xT	30	±0.5	20	±0.4	2-10	+0.5 0
-30x25xT	30	±0.5	25	±0.5	2-14	+0.5 0
-31x4xT	31	±0.7	4	±0.3	2-7	+0.5 0
-31x5xT	31	±0.7	5	±0.3	2-13	+0.5 0
-31x6xT	31	±0.7	6	±0.3	2-10	+0.5 0
-31x21xT	31	±0.7	21	±0.4	2-12	+0.5 0
-32x12xT	32	±0.7	12	±0.4	2-15	+0.5 0
-33x5xT	33	±0.7	5	±0.3	2-12	+0.5 0
-33x12xT	33	±0.7	12	±0.4	2-7	+0.5 0
-33x18xT	33	±0.7	18	±0.4	2-11	+0.5 0
-33x22xT	33	±0.7	22	±0.4	2-10	+0.5 0
-35x4xT	35	±0.7	4	±0.3	2-8	+0.5 0
-35x8xT	35	±0.7	8	±0.3	2-12	+0.5 0
-35x10xT	35	±0.7	10	±0.3	2-14	+0.5 0

注) 寸法違い品についても都度ご相談に応じさせていただきます。
 Note) Please contact us for any geometry.

超硬合金板素材 Cemented carbide plates

材種 Grade

UTi20T	HTi10	TF15	NX55	TBF61
○	○	○	×	×



呼び記号 Order Number	寸法 (mm) Dimensions					
	L		W		T	
TLB-35x13xT	35	±0.7	13	±0.4	2-12	+0.5 0
-35x20xT	35	±0.7	20	±0.4	2-12	+0.5 0
-36x5xT	36	±0.7	5	±0.3	2-12	+0.5 0
-36x7xT	36	±0.7	7	±0.3	2-10	+0.5 0
-36x9xT	36	±0.7	9	±0.3	2-7	+0.5 0
-38x24xT	38	±0.7	24	±0.4	2-11	+0.5 0
-39x4xT	39	±0.7	4	±0.3	2-8	+0.5 0
-39x28xT	39	±0.7	28	±0.5	2-12	+0.5 0
-40x2xT	40	±0.7	2	±0.3	2-10	+0.5 0
-40x4xT	40	±0.7	4	±0.3	2-12	+0.5 0
-40x6xT	40	±0.7	6	±0.3	2-12	+0.5 0
-40x10xT	40	±0.7	10	±0.2	2-11	+0.5 0
-40x15xT	40	±0.7	15	±0.4	2-15	+0.5 0
-40x16xT	40	±0.7	16	±0.4	2-12	+0.5 0
-42x20xT	42	±0.7	20	±0.4	2-11	+0.5 0
-43x9xT	43	±0.7	9	±0.3	2-12	+0.5 0
-45x6xT	45	±0.7	6	±0.3	2-12	+0.5 0
-47x2xT	47	±0.7	2	±0.3	2-12	+0.5 0
-50x2xT	50	+1.5 0	2	+0.3 0	2-10	+0.5 0
-50x3xT	50	+1.5 0	3	+0.3 0	2-12	+0.5 0
-50x4xT	50	+1.5 0	4	+0.3 0	2-11	+0.5 0
-50x5xT	50	+1.5 0	5	+0.3 0	2-11	+0.5 0
-50x6xT	50	+1.5 0	6	+0.3 0	2-14	+0.5 0
-50x7xT	50	+1.5 0	7	+0.4 0	2-8	+0.5 0
-50x8xT	50	+1.5 0	8	+0.4 0	2-12	+0.5 0
-50x9xT	50	+1.5 0	9	+0.4 0	2-10	+0.5 0
-50x10xT	50	+1.5 0	10	+0.4 0	2-12	+0.5 0
-50x12xT	50	+1.5 0	12	+0.5 0	2-12	+0.5 0
-50x15xT	50	+1.5 0	15	+0.5 0	2-15	+0.5 0
-51x3xT	51	+1.5 0	3	+0.3 0	2-12	+0.5 0
-51x4xT	51	+1.5 0	4	+0.3 0	2-10	+0.5 0
-51x5xT	51	+1.5 0	5	+0.3 0	2-12	+0.5 0
-51x12xT	51	+1.5 0	12	+0.5 0	2-12	+0.5 0
-52x3xT	52	+1.5 0	3	+0.3 0	2-12	+0.5 0

呼び記号 Order Number	寸法 (mm) Dimensions					
	L		W		T	
TLB-52x4xT	52	+1.5 0	4	+0.3 0	2-12	+0.5 0
-55x6xT	55	+1.5 0	6	+0.3 0	2-12	+0.5 0
-55x20xT	55	+1.5 0	20	+0.5 0	2-12	+0.5 0
-55x30xT	55	+1.5 0	30	±1.0	2-11	+0.5 0
-60x2xT	60	+1.5 0	2	+0.3 0	2-13	+0.5 0
-60x3xT	60	+1.5 0	3	+0.3 0	2-10	+0.5 0
-60x6xT	60	+1.5 0	6	+0.3 0	2-10	+0.5 0
-60x30xT	60	+1.5 0	30	+0.6 0	2-11	+0.5 0
-65x35xT	65	+2.0 0	35	+0.8 0	2-15	+0.5 0
-70x4xT	70	+2.0 0	4	+0.3 0	2-13	+0.5 0
-70x7xT	70	+2.0 0	7	+0.4 0	2-11	+0.5 0
-80x2xT	80	+2.0 0	2	+0.3 0	2-12	+0.5 0
-80x7xT	80	+2.0 0	7	+0.4 0	2-10	+0.5 0
-81x3xT	81	+2.0 0	3	+0.3 0	2-13	+0.5 0
-81x4xT	81	+2.0 0	4	+0.3 0	2-11	+0.5 0
-87x27xT	87	+2.0 0	27	+0.6 0	2-11	+0.5 0
-100x2xT	100	+5.0 0	2	+0.5 0	2-12	+0.5 0
-100x6xT	100	±2.5	6	+0.5 0	2-12	+0.5 0
-100x8xT	100	±2.5	8	+0.5 0	2-12	+0.5 0
-103x2.5xT	103	+5.0 0	2.5	+0.5 0	2-12	+0.5 0
-103x3xT	103	+5.0 0	3	+0.5 0	2-12	+0.5 0
-103x4xT	103	+5.0 0	4	+0.5 0	2-12	+0.5 0
-103x5xT	103	+5.0 0	5	+0.5 0	2-12	+0.5 0
-110x2.5xT	110	±2.5	2.5	+0.5 0	2-12	+0.5 0
-110x3xT	110	±2.5	3	+0.5 0	2-12	+0.5 0
-110x4xT	110	±2.5	4	+0.5 0	2-12	+0.5 0
-110x5xT	110	±2.5	5	+0.5 0	2-12	+0.5 0
-110x6xT	110	±2.5	6	+0.5 0	2-12	+0.5 0
-120x3xT	120	±2.5	3	+0.5 0	2-12	+0.5 0
-120x4xT	120	±2.5	4	+0.5 0	2-12	+0.5 0
-120x5xT	120	±2.5	5	+0.5 0	2-12	+0.5 0
-140x2xT	140	±2.5	2	+0.5 0	2-12	+0.5 0
-140x3xT	140	±2.5	3	+0.5 0	2-12	+0.5 0
-140x4xT	140	±2.5	4	+0.5 0	2-12	+0.5 0

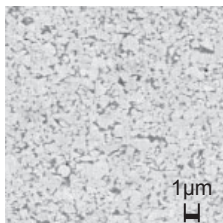
注) 寸法違い品についても都度ご相談に応じさせていただきます。
 Note) Please contact us for any geometry.

金型用素材 Carbide Materials (for die & mold)

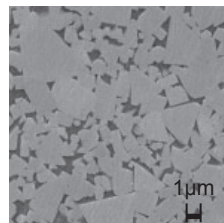
■ 超硬合金材種一覧 Cemented carbide grade classification

材種 Grade	WC 粒径 Grain size (μm)	含有量 Content (mass%)			硬さ Hardness (HRA)	抗折力 TRS (GPa)	特徴 Features
		WC	Co	その他 Other			
MF20	<0.6	Bal.	12	—	92.0	4.4	非常に高い硬さを維持しながら抗折力を向上させた超微粒合金です。 MF20 grade has exceptional advantages of high strength and hardness with optimizing high wear resistance.
GTi20	<2.5	Bal.	11	—	89.0	2.7	一般耐摩耗用材種として、各種耐摩耗工具や機械部品として広く使用されています。 GTi20 grade is used for general wear resistant application. The series offers various wear-resistant tools and machine parts.

● 組織比較 Comparison of structure

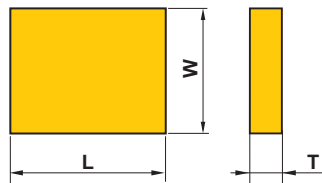


MF20



GTi20

■ 金型用超硬合金素材 Cemented carbide plates for die & mold



呼び記号 Order Number	寸法 (mm) Dimensions					
	L		W		T	
TLD-60x40xT	60	± 2.0	40	± 2.0	3-10	$+1_0$
-66x61xT	66	± 2.0	61	± 2.0	3-15	$+1_0$
-100x100xT	100	± 5.0	100	± 5.0	3-20	$+1_0$
-150x100xT	150	± 5.0	100	± 5.0	3-20	$+1_0$

注) 寸法違い品についても都度ご相談に応じさせていただきます。
Note) Please contact us for any geometry.

三菱マテリアル株式会社

〒130-0015
東京都墨田区横網1-6-1 国際ファッションセンタービル7階
加工事業カンパニー 営業本部 基礎製品営業部
工具素材グループ
TEL 03-5819-5315 FAX 03-5819-5310

MITSUBISHI MATERIALS CORPORATION

ADVANCED MATERIALS & TOOLS COMPANY
7F, KFC BLDG., 1-6-1, YOKOAMI, SUMIDA-KU, TOKYO 130-0015, JAPAN
TEL +81-3-5819-5315 FAX +81-3-5819-5310

<http://blank.mitsubishicarbide.com>

(仕様はお断りせずに変更する場合がありますのでご了承ください)